



ekidnaTM
TREE GUARD

Stop them with spikes



ekidnatreeguard.com.au



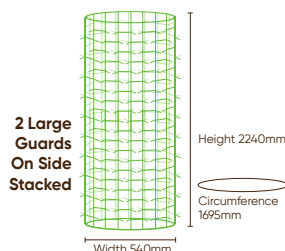
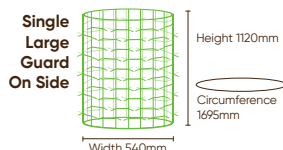
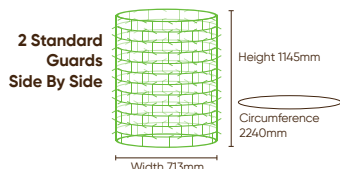
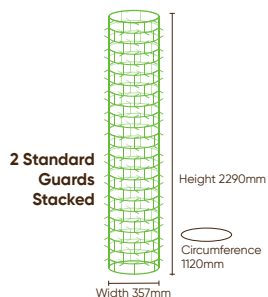
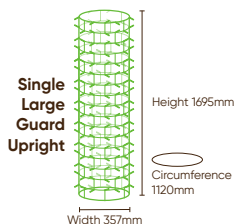
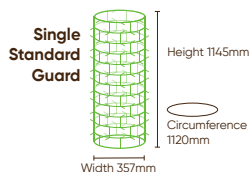
Ekidna Tree Guards are the perfect solution for anyone needing to protect individual tree and shrub plantings from animals including cattle, deer, sheep, kangaroos, and rabbits.

The key to their effectiveness is the spikes that are cut and pressed into 100% Australian welded wire mesh. They have now proven themselves in a large number of landscapes across Australia and New Zealand since 2021.

Key benefits

- Flat packed to enable efficient freight and transport to project sites with up to 200 on a single pallet
- Fast to install – about 10 minutes per plant
- Long lasting and reusable
- Guard sheets can be joined to create different configurations of guard size
- 100% Australian made and owned
- Cheaper than other effective paddock tree protection options

The guard comes in two different sizes and can be made into the following example configurations.



Applications

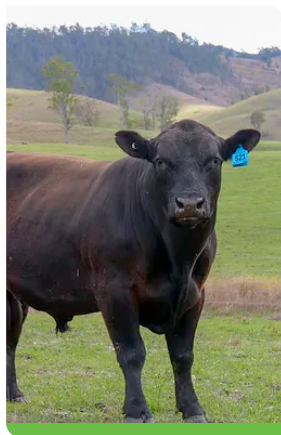


Increasing Livestock Productivity

There is a growing realisation about what trees can do for grazing production systems. Trees scattered throughout pasture, also known as 'Silvopasture' is an approach that has been used for centuries but it is now receiving a worldwide renaissance as a solution to increase livestock productivity. The shade provided by the trees moderates heat stress in hot environments and trees can even bring a new additional income stream from food, fodder, products or timber. Silvopasture has also been shown to increase the nutrient density of pasture leading to increased weight gain in livestock, and to increases in stable soil carbon.

Case Study:

Marlea Angus



Marlea Angus is a growing Angus breeding enterprise located at the foothills of the Barrington Tops, New South Wales, Australia. They currently operate over three properties at Barrington and Tibbuc. They produce quality registered and commercial black Angus cattle that are designed to be sustainable and have a versatile use in the supply chain. They have used the Ekinda Tree Guard™ to increase shade availability at cattle camps, which is part of their focus on animal welfare to manage heat stress and provide sufficient shelter at all times.



"They are without a doubt the best thing I've tried. They serve their purpose well, are robust, and look tidy as well. Will be buying more for sure as we need them!"

Liam Mowbray, Marlea Angus.



Improving Biodiversity

Paddock trees have a critical role to play in improving biodiversity via being primary habitat for certain animals and aiding in connecting different pieces of core habitat. They also increase the diversity of living things in the soil.



Case Study:

The Connecting Koalas project

The Connecting Koalas project aims to improve habitat connectivity in the Rockley Mount district through paddock tree and revegetation corridor projects, increasing community awareness and engagement, and greater knowledge and understanding of the local koala population. Achieving these key objectives will make positive contributions towards the long term survival of the Rockley Mount koalas.



"I have had reports that the cattle don't seem to touch the Ekidna ones but some others we supplied without all of your spikes seemed to attract the stock to have a scratch on them, so we are really pleased with your guards."

Senior Land Services Officer, Central Tablelands LLS.



Commercial Revegetation Projects

Large scale revegetation projects are undertaken at a range of sites including mines, disused forestry plots, and at the completion of new infrastructure being built. With increasing impacts from vertebrate pest animals across Australia and New Zealand, the Ekidna Tree Guard™ can help commercial revegetation companies achieve the desired survivability rates for their projects. They also allow for livestock to be used as a weed and fire suppression strategy.



Case Study:

Regenerative Landscapes Australia

Regenerative Landscapes Australia undertakes a large variety of commercial scale revegetation projects. They use the Ekidna Tree Guard at sites known to have grazing pressure from large pest species such as deer. An example of this is the project they have recently done for Tilt Renewables where revegetation was undertaken around newly installed wind turbines at Rye Park Wind farm near Yass on the NSW western slopes.



“The Ekidna Guard gives us the confidence to say to clients that we will achieve high establishment rates at locations with greater chance of predation or where fencing is not suitable. They are efficient to transport to site and suited to the conditions in the field to protect our trees.”

Nick Huggins – Director, Regenerative Landscapes Australia.



Beautification of Country Estates

Owners of rural properties face the challenges of managing pest or livestock attack on their trees as much as primary producers. Many small farm owners invest significant amounts in planting advanced trees to improve the aesthetics of their property.



Case Study:

Alkira Cottages

Supplant Australia is a technology leader in the crop management space globally. They have developed unique sensors and algorithms that generate real-time insights into crop health to on farm decision making. This sensitive technology is often installed in places where livestock are used to maintain in between crop rows, such as orchards and so the Supplant team has used the Ekinda Guards to protect the expensive equipment from damage.



“Ekinda Tree Guard is a brilliant company to deal with. Mat provides an outstanding service from ordering to organising delivery. The well-made guards have been used to protect our young trees from livestock, wildlife and camels and have done a superb job, highly recommend.”

Alison & Graham, Alkira owners, Gembrook Victoria.



Protecting On-Farm Infrastructure

On farms there are often pieces of infrastructure that can be damaged by livestock and pests. Adding an Ekidna Guard can save costly damage to such equipment. Equipment that has been protected by the guards include sensors, telecommunications gear, and trough floats.



Case Study: Supplant Australia

Supplant Australia is a technology leader in the crop management space globally. They have developed unique sensors and algorithms that generate real-time insights into crop health to on farm decision making. This sensitive technology is often installed in places where livestock are used to maintain in between crop rows, such as orchards and so the Supplant team has used the Ekinda Guards to protect the expensive equipment from damage.



“We needed a solution that would keep our sensitive farm equipment and sensors safe. The Ekidna Guards were quick to install and have done a great job at protecting the gear while still allowing livestock to maintain the grassed areas in the orchards.”

Laurence Cheng

The Business

About Ekidna Tree Guard

Ekidna Tree Guard is based in the Hunter Valley, New South Wales where we manufacture 100% Australian made tree guards designed to prevent tree grazing by domestic livestock and pest animals of all types.

Ekidna Tree Guard started operation in 2021 when the need for tree protection on our own small farm led us to investigate alternatives to costly post and rail installation. We first made a number of guards using a pair of snips and some pliers (very time consuming!) but it proved to us the spiky mesh would work. When locals saw them in the paddock and started asking for the product, we decided to put the effort into developing methods and machinery that could make them at scale.

Since then, we have sold tens of thousands of tree guards around Australia and have exported in to New Zealand. This has allowed the product to prove itself across all sorts of landscapes and with a large variety of livestock and pest animals. In late 2023, with demand growing from private, government and not-for-profit clients, we have started the wholesale side of the business to increase local accessibility to the guards. We continue to expand our relationships with high-quality retailers.

Ekidna Tree Guard are well placed to assist with significant industry challenges such as animal welfare in a heating climate, improving biodiversity outcomes, achieving high quality mine site rehabilitation, and aiding landholders drive for net zero emissions.

Retailer Network

In 2023 Ekidna Tree Guard started engaging with like-minded retailers to improve access to the guards. Stockists so far include a number of rural supplies stores and nurseries.

With such a unique Australian-made product and wholesale pricing available, there is a good margin available when selling the Ekinda Guard to your local community.



Please contact Mat for more information on the retailing opportunity.



How to buy

Ekidna Tree Guards are available from a network of retailers around Australia and New Zealand or direct from the factory. To view the available options please go to www.ekidnatreeguard.com.au/how-to-buy/

Up to 200 guards can be freighted on a single pallet making it a freight effective option for larger projects. If you have any questions about guards please contact us and we will be happy to answer them for you.



Contact us

mat@ekidnatreeguard.com.au

0466 302 850

ekidnatreeguard.com.au